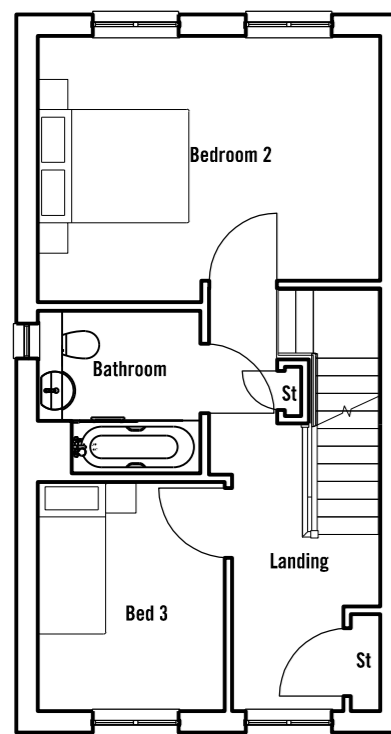
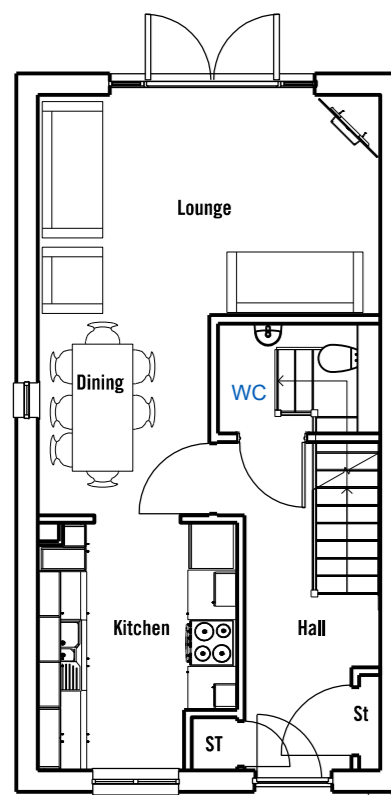


SECOND FLOOR PLAN



FIRST FLOOR PLAN



GROUND FLOOR PLAN



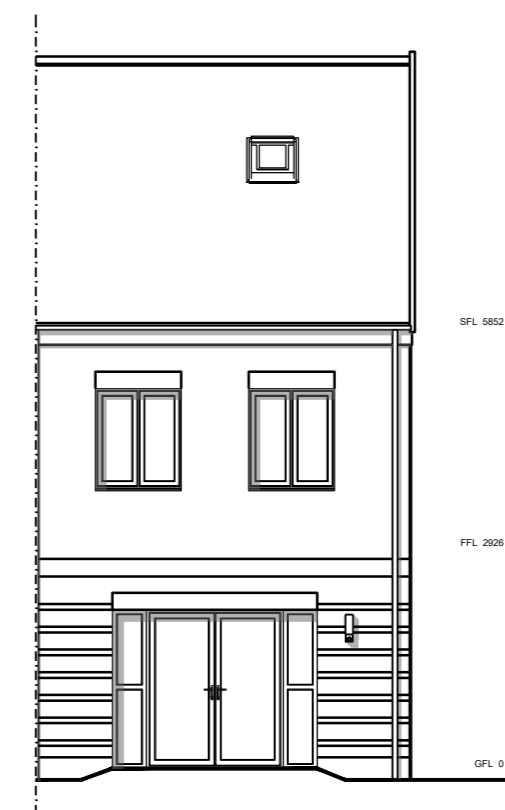
**FRONT ELEVATION
OP 1**

Plots - 8, 9, 10, 181, 182, 183 only

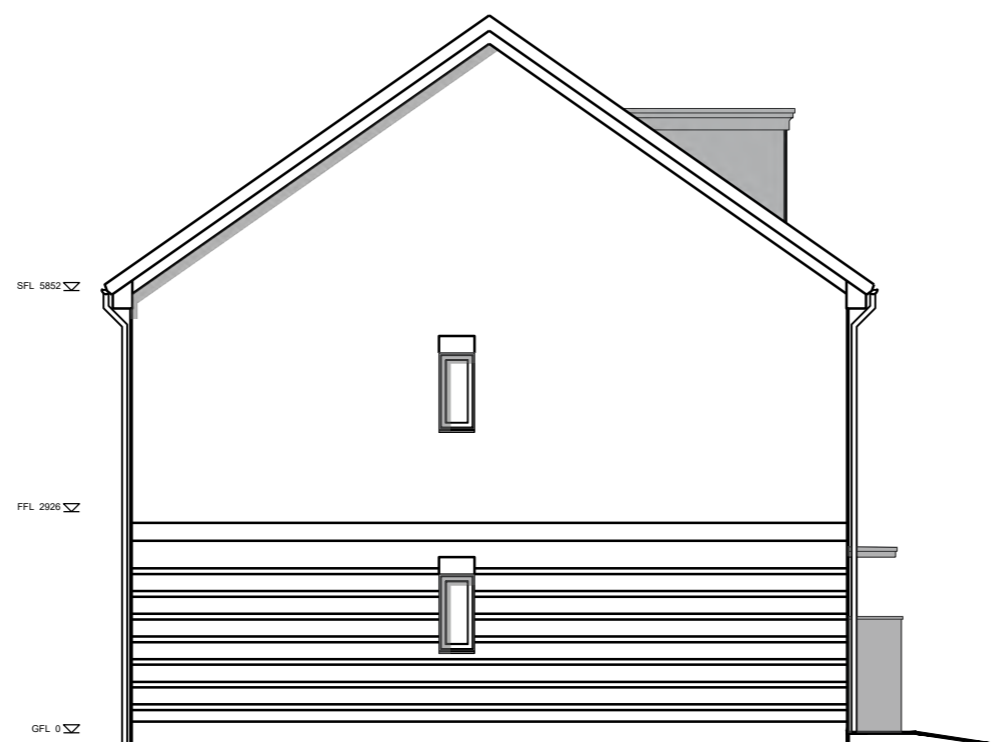


**FRONT ELEVATION
OP 2**

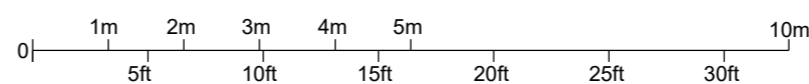
Plots 33, 34, 35, 211, 212 only



REAR ELEVATION



SIDE ELEVATION 1



PLOTS

As Drawn: 9, 10, 34, 35, 181, 182, 212
 Handed: 8, 33, 183, 211

MATERIALS LEGEND

- Roof Tiles - 30 degree roof pitch - Marley Modern Interlocking Concrete Tiles
- Roof Tiles - 12.5 degree roof pitch - Metrotile Slate .900 Lightweight Steel Roofing - Terracotta
- Brick Units
 - Main Brick GF - Red Multi Brick
 - Main Brick FF/SF - Red Multi, Buff of Brown Brick
 - Brick Detail & Banding - Red Multi or Buff Brick
- Render units
 - Main Render - EPSITECH Render (0505B206).
 - Brick Detail & Banding - Red Multi
- Window Surrounds - Grey Aluminum or similar
- Brick below DPC - Red Multi Brick
- Rainwater Goods - Black uPVC
- Front Doors - Vista Panels Verona style, colour: mixed colours - Olive Green, Navy Blue, Maroon Red etc
- Window & Door Frames - Grey uPVC
- Front Door Canopies - Flat GRP Dark Grey
- Soffit & Fascia - Grey uPVC

Refer to Materials Plan for details

This drawing is the copyright of Roberts Limbrick Ltd and should not be reproduced in whole or in part or used in any manner whatsoever without their written permission.

Do Not scale off this drawing, use only figured dimensions and report any discrepancies or omissions to the Architect immediately.

rev.	date	description
A	18/06/21	Striped brickwork added to the ground floor.



project
 RESIDENTIAL DEVELOPMENT
 FOSSETTS WAY
 SOUTHEND-ON-SEA

client
 ILKE HOMES

drawing
 HOUSETYPE - THETFORD
 PLANS & ELEVATIONS

status
PLANNING

ROBERTS LIMBRICK LTD

The Carriage Building, Bruton Way,
 Gloucester, GL1 1DG

The Estates Office, 25 - 26 Gold Tops,
 Newport, NP20 4PG

T. 03333 405 500
 mail@robertslimbrick.com
 www.robertslimbrick.com

Registered Office: England No. 06658029

scale 1/100 @ A2

date 26/03/21 **author** RJ

project	drg no.	rev.
9913	PL24	A